



WENTRCEK ZEBULON
RELEASE 1: DYNEEMA
FEB 2024

Inspired by North Korean hotel decor and old woodworking techniques, the pieces in RELEASE 1 were made using a combination of Dyneema, foam, and vinyl.

Dyneema is a high-performance, non-woven composite fiber. Referred to by its parent company as 'the world's strongest fiber,' Dyneema is used in applications ranging from ballistics to construction to sailing. While researching a way to design a tent that could be 'bulletproof' and 'stab proof,' we became aware of this material. That project has yet to be realized, but it did inspire the use of Dyneema here as a coating for the foam. We chose a lighter weight fabric for its semi-transparency and soft, papery feel.

There are actually two types of foam used here, both polyurethane upholstery foams of varying density. The foam used is basically scrap, either ordered for clients who went AWOL or offcuts from our foam supplier. We shaped the foam pieces with hand tools - wood saw, electric hot knife, a microplane - and the Dyneema was applied using an adhesive formulated for bonding polyurethane to fabric.

Finally, we backed some of the Dyneema with cotton batting and a found vinyl tablecloth, creating something in between a doily, a tarp, and a throw pillow.

RELEASE 1 is the first move in establishing a new way of making and disseminating our work. The idea is to work faster, experiment more, and just generally be weirder.

Each release is intended to be a standalone set of works, and each of the works within is unique, a one-of-one, never to be made again. We assign each piece a serial number, and the owner of the piece is recorded in our database when it's sold.

SERIAL NUMBER TAG

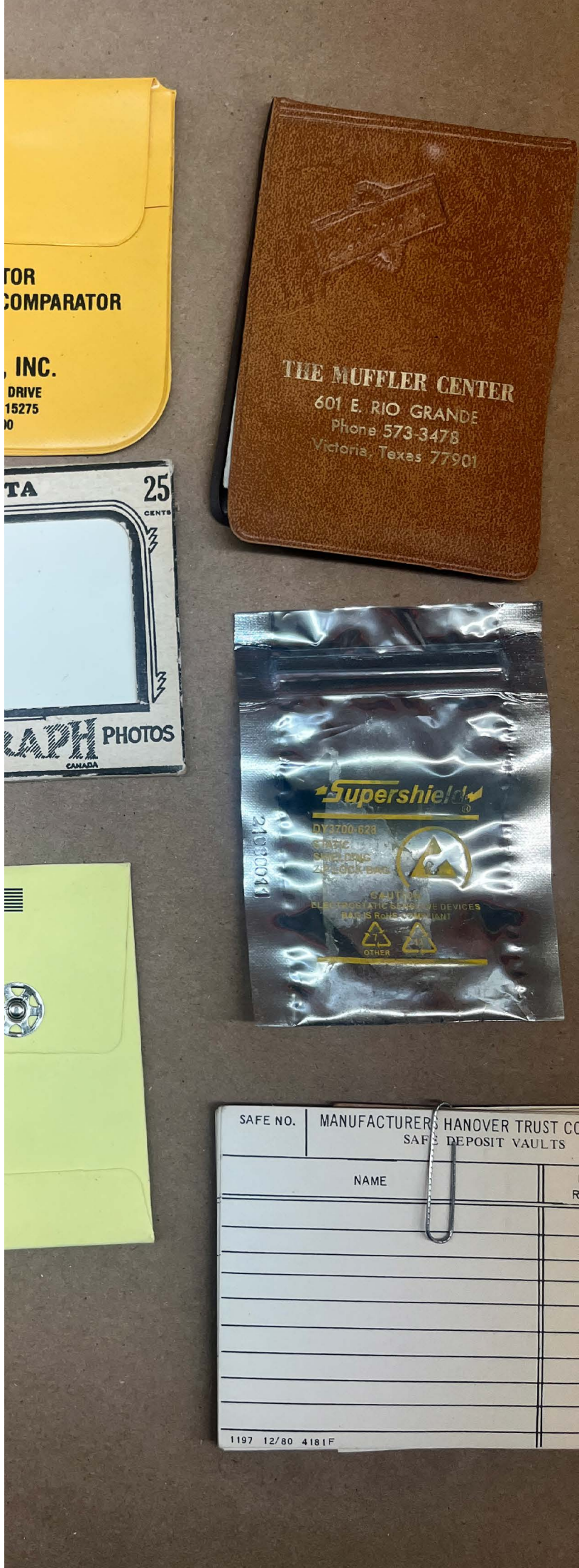


Each piece is assigned a serial number, recorded on a steel tag, to indicate its unique nature.

WENTRCEKZEBULON.COM

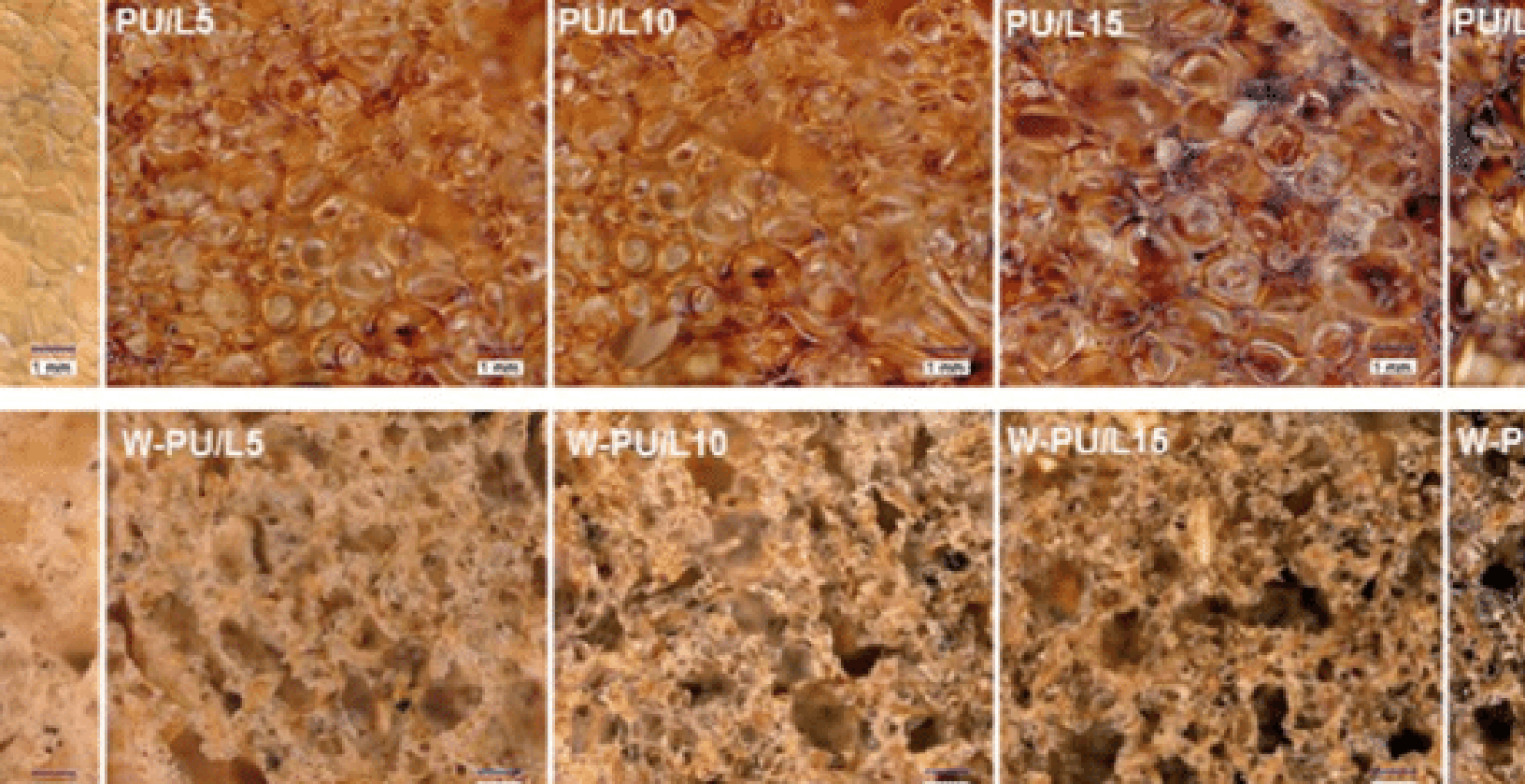
wzprocurement.bigcartel.com





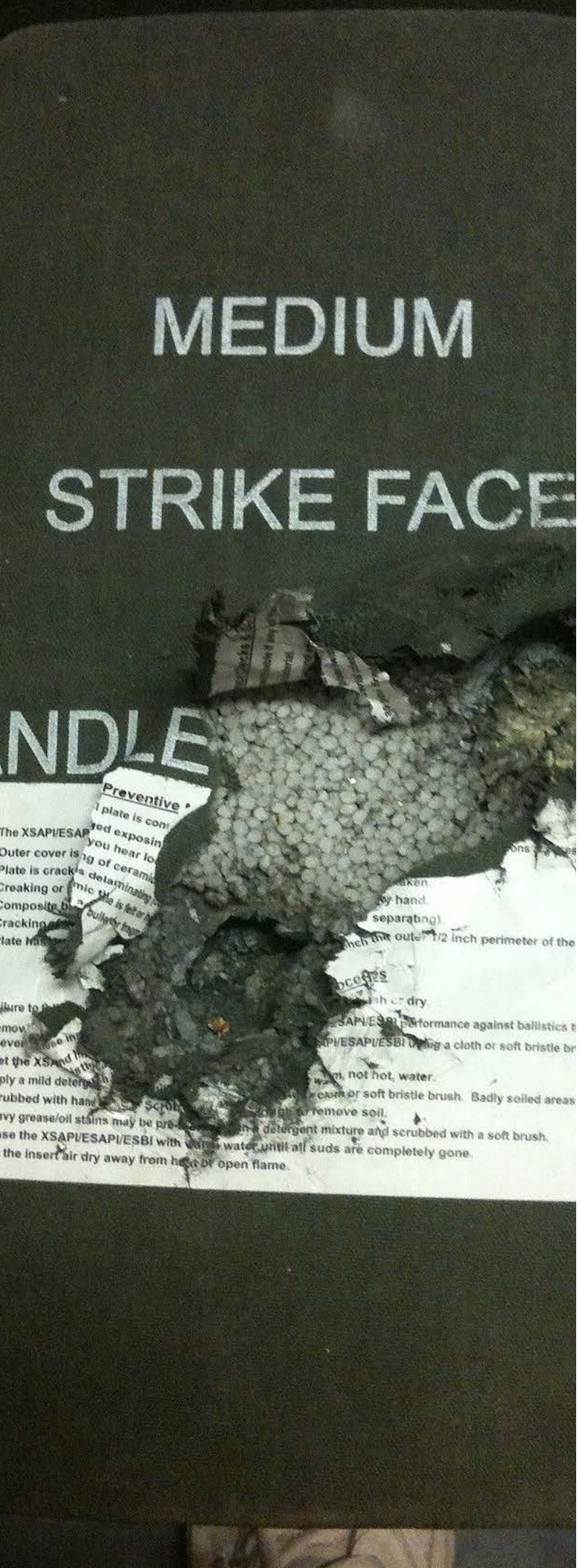










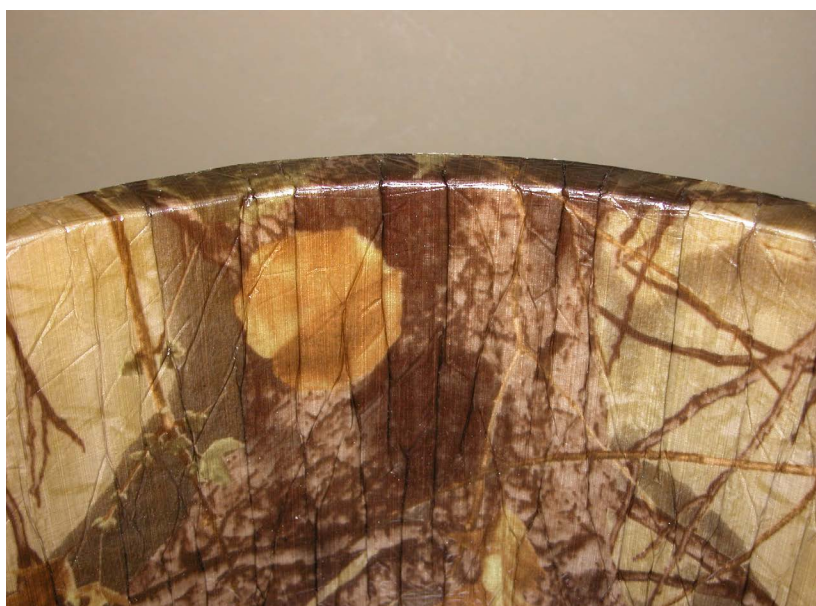


FLEXIBLE WALL LOUNGE



23H x 25D x 20W

This compact lounge chair has a flexible,
wrap-around back.



PADDED THROW



37L x 27W

Use it as a lap covering, a floor cushion, or a shawl.



SETTEE



19.5H x 43L x 22W

An offcut salvaged from our foam supplier, repurposed as seating. Includes a Dyneema cushion.



CORRUGATED SIDE TABLE (SHORT)



14H x 18.25L x 12W

Made from a machine-carved offcut, this sturdy side table can also serve as extra seating. Short version.



CORRUGATED SIDE TABLE (LONG)



14H x 26.5L x 12W

Made from a machine-carved offcut, this sturdy side table can also serve as extra seating. Long version.

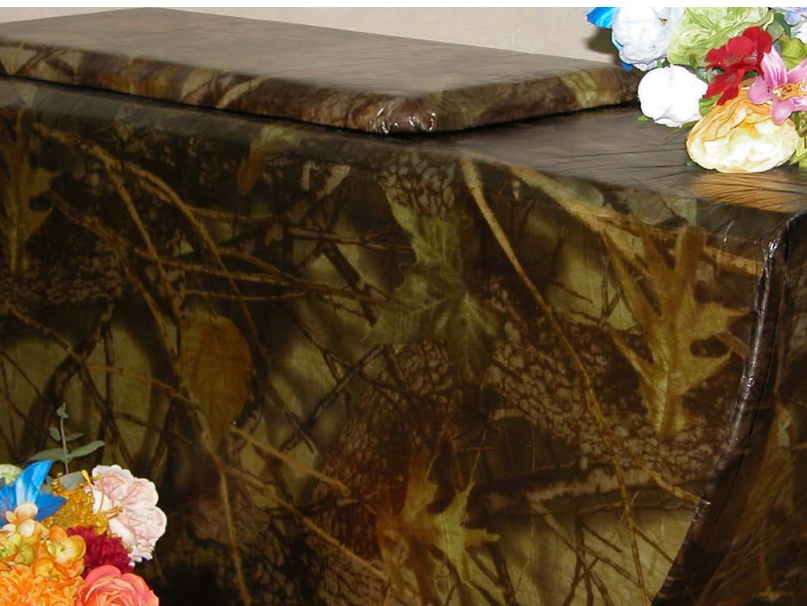


CRESCENT BENCH



16H x 36L x 12W

Suitable as a bench or side table. Includes a matching cushion.



ARM REST



6H x 12L x 5.25W

A portable rest for your arm.



MODULAR LOUNGE



23H x 25L x 20W (Individual Chair)

One-armed lounge chairs. Sold Separately. Pair them to create one large unit.



ITEM 8L & 8R

RAW FACE STOOL



12H x 20L x 22W

One side of this stool reveals the foam structure beneath; as the foam oxidizes over time, its colors will shift and deepen. Includes a two-sided vinyl/Dyneema cushion.

